

Food Waste in NSW

The problem



What's in your red lid bin?

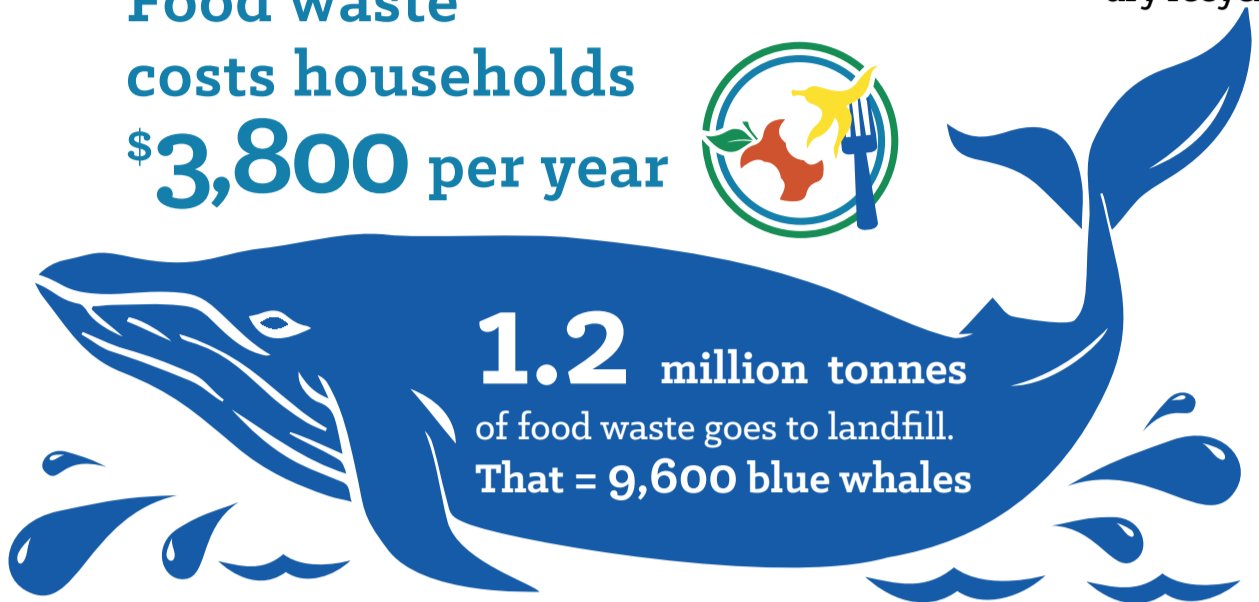
33% rubbish



45% food and garden waste

22% dry recyclables

Food waste costs households \$3,800 per year



1.2 million tonnes of food waste goes to landfill. That = 9,600 blue whales

What the NSW government is doing



\$27m

to support kerbside collections

\$7m



for compost markets



\$105.5m investment in organics recycling

Committed to halve food waste by

2030



\$9m

Food waste avoidance and donation

Food donation

17m meals saved a year



Households in 43 councils in NSW have food organics and garden organics collections



\$57m

organics processing



What you can do



Put it in the green lid bin where available

Avoid food waste at home and work

- plan your meals
- make a shopping list
- use up leftovers



Compost or start a worm farm



Support a food charity



Use compost to:

- regenerate land
- increase water retention in soil
- grow healthy veggies



Like Love Food Hate Waste

www.lovefoodhatewaste.nsw.gov.au

